

HiTECH

Technologies, Inc.

SuperSwitch™ LL-200 Miniature Multi Point Integral Liquid Point Level Switch

Model LL-200

SuperSwitch™ Ultrasonic Sensing Technology

APPLICATIONS

- ◆ Truck or Rail car loading/unloading
- ◆ Auto Fill/Empty ~ Recovery systems
- ◆ Sump Pump control
- ◆ Distillation Processing

ADVANTAGES

1000: 1 wet to dry ratio

316SS machine body sensor

Automatic empty mode

w/ high & high or high & low alarm

Automatic fill mode

w/ high & high or high & low alarm

Miniature encapsulated electronics

Integral explosion proof housing

Output 10 amp relay/two wire loop power



The SuperSwitch™ LL-200 Series Multi Point Liquid Level Switch is the ideal solution to a host of liquid level sensing and control applications.

It uses proven ultrasonic technology to operate in virtually any liquid. Its small size and standard 3/4" NPT mounting make it the perfect choice for new or existing applications.

Multi point integral unit can be used as a high-high, high-low, low-low, automatic empty, automatic fill, or high level fail safe. These modes require no rewiring or additional modules.

The multi point integral switch can be used as a two wire independent 4-20ma output.

HiTECH Technologies, Inc.

301 Oxford Valley Road, Yardley, PA 19067-7706

Technical support: 800. 755. 4507

Tel: 215. 321. 6012 Fax: 215. 321. 6067 - www.hitechtech.com

SPECIFICATIONS

Repeatability:

2 mm typical

Delay(On):

0.5 seconds (standard)

Input Power:

115V or 230V 50/60 Hz AC standard;
12 or 24V DC optional

Outputs:

10A SPDT- Independent alarms;
10A SPDT- Autofill & alarm
10A SPDT- Auto-empty & alarm;
4-20mA - Independent two wire

Temperature Range:

Sensor -40°F to +300°F (-40°C to 149°C)
Electronics -20°F to +170°F (-29°C to 77°C)

Housing:

NEMA 4 / NEMA 7,
Explosion-proof & Watertight

Sensor:

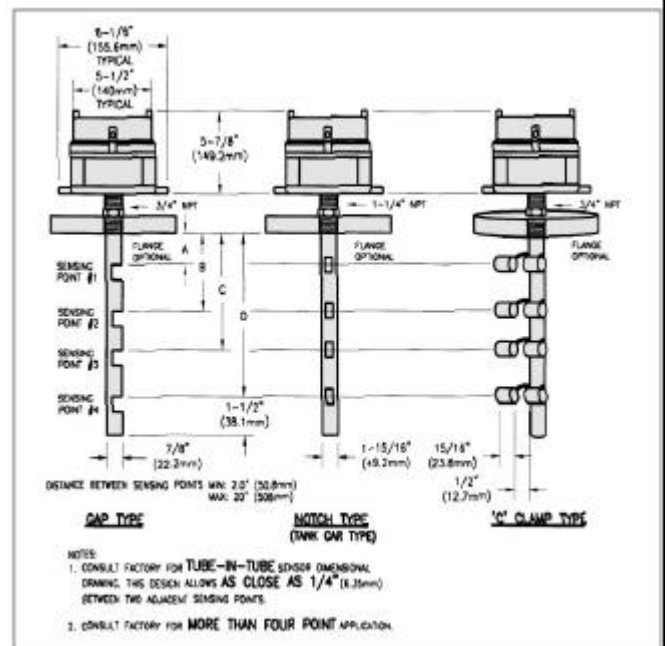
316 SS standard

Pressure:

Operating: Up to 1000 psig (68.9 Bars)

Mounting:

3/4" NPT standard
Flange Mounting available



PERFORMANCE GUARANTEE

Since 1986, every instrument sold by HiTECH has been guaranteed to perform in the application it originally was engineered and recommended for. Our company policy remains the same, every product sold comes with a written performance guarantee.

Should the equipment be unable to perform satisfactorily in your application and we are not able to correct the problem, we will accept the instrument in return and issue full credit. This performance guarantee is valid for 60 days. Thereafter, our standard limited two years factory warranty goes into effect.